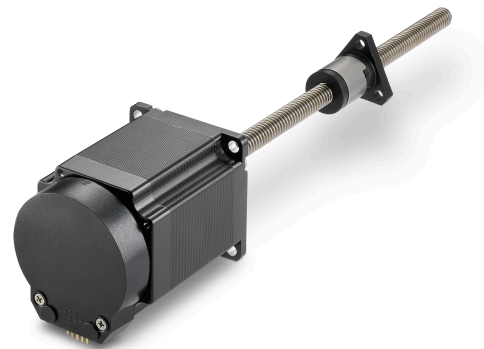


Closing the Stepper Motor Linear Actuator Feedback Loop with Optical Rotary Encoders

Linear motion systems are becoming more sophisticated, and demand is increasing for precise load positioning information. Since standard stepper motor linear actuator (SMLA) configurations do not provide feedback on whether or not a move was completed, outfitting them with an optical rotary encoder can be an effective and simple solution to get real-time motion feedback.

A recent article (also published in *Automation World*) looks closely at encoders and how their load positioning feedback can be critical for many high-precision applications.



[READ THE FULL ARTICLE](#)

[TRY OUR SMLA SELECTOR TOOL](#)

Got linear motion questions?

We've got answers.

With 75+ years of experience in the linear motion industry, Thomson has built a solid reputation as a trusted, knowledgeable leader. So when you've got questions related to linear motion, you can count on us to provide quick, accurate and simple answers. With that in mind, we've built a repository of **Thomson Tips** to help you with commonly asked questions.



[CHECK OUT THOMSON TIPS](#)

[HOW ELSE CAN WE SUPPORT YOU?](#)

Tackle larger loads, higher duty cycles and longer strokes with the Electrak[®] XD

The Thomson Electrak XD is strong enough to take on hydraulic applications while, at the same time, be smarter, smaller and more efficient than competitive technologies. On top of its groundbreaking strength, the XD offers extensive protection against even the harshest conditions and ingress, and features enhanced controllability and diagnostics via onboard controls.

Key highlights of the Electrak XD include:

- Load handling up to 25,000 N
- Duty cycle up to 100%
- Internal load holding brake
- Optional shock load dampening



- Strokes up to 1200 mm
- Speeds up to 75 mm/s
- Optional manual override
- Constant monitoring and diagnostics

**LEARN MORE ABOUT THE
ELECTRAK XD**

**TRY THE LINEAR ACTUATOR
SELECTOR TOOL**

Share via Social Media



©2024 Thomson Industries, Inc.
2400 Curtiss Street, Downers Grove, IL 60515, USA